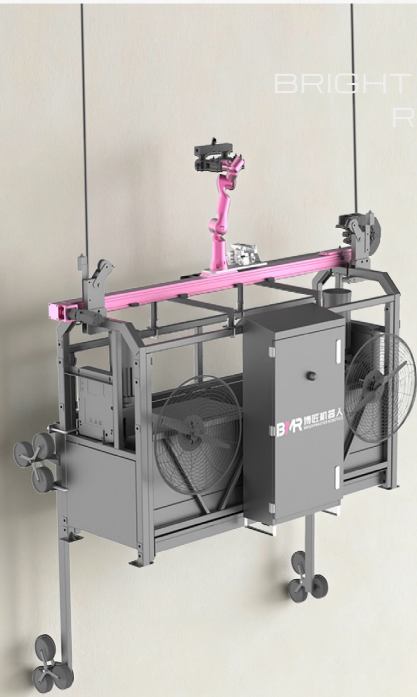


Scaling Walls with Ease Pioneer in Wall Finishing

Exterior Wall Coating Robot



Product Introduction*

The Exterior Wall Coating Robot T100 is a new-generation intelligent aerial work robot designed for coating exterior façades of mid- and high-rise buildings. It supports primer and topcoat application on irregular surfaces such as gable walls, balcony surfaces, and internal/external corners. Applicable coating types include latex paint, real stone paint, multicolor paint, relief paint, and other commonly used exterior wall coating systems. The new product adopts a modular, lightweight, and platform-based design concept and can be mounted on industry-standard aerial work gondolas (2–4 m), offering high industry versatility and strong promotion potential.

The robot features intelligent functions such as switching between semi-automatic and fully automatic operation modes, automatic feature recognition and spray path planning, automatic obstacle crossing, remote construction monitoring, construction data statistics, and aerial attitude monitoring. It is user-friendly and effectively reduces safety risks associated with high-altitude operations, making it mainly suitable for new construction or renovation projects in residential and public buildings.

High Efficiency



The overall efficiency of the gable wall flat-coating system reaches 180 m²/h; the overall efficiency of the textured paint system reaches 100 m²/h.

High Quality



Precise control of coating parameters with dynamic multi-spray adaptation to different scenarios ensures uniform coating and stable quality.

High Coverage



With mobile coating and dynamic pressure control technology, the system can cover areas such as balcony surfaces, air-conditioner recesses, and internal/external corners, achieving an overall coverage rate of over 80%.

High Safety



Replaces manual high-altitude operations; reduces construction safety risks; lowers the harm of paint mist to the human body.

Path Planning



Independently developed automatic path planning software; automatically generates robot coating paths; convenient and efficient construction applications

Intelligent



Fully automatic coating operations; automatically generated work paths; remote monitoring and control via an app

Main Parameters*

Weight	≤400kg	Construction Coatings	Latex paint, real stone paint, relief paint, multicolor paint
Construction Scenarios	Flat surfaces, balconies, internal/external corners, bay windows, curved surfaces	Rated Power	4kW
Working Height	≤100m	Trajectory Planning	Manual, fully automatic
Operating Voltage	380V	Obstacle Crossing Height	≤200mm
Material Tank Capacity	80L	Effective Stroke	2-4m
Overall Coverage Rate	≥80%	Module Weight	≤50kg

Application Cases*

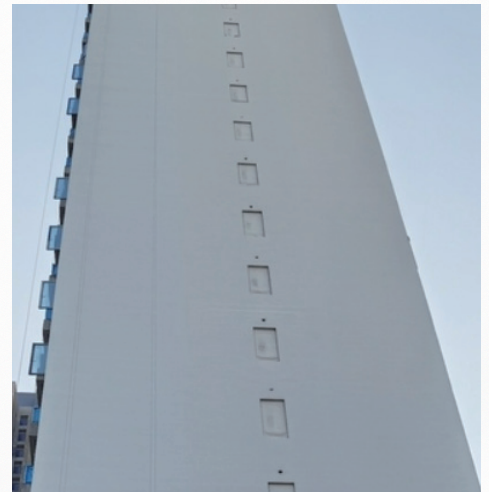
- To date, the exterior wall coating robot has been applied in projects such as the Anhui Tianchang Bo'an Project, Nansha Tanwei Village Renovation Project, Foshan Fengtong Garden Project, and Shunde Talent Housing, with a cumulative delivered area exceeding 10,000 m². All construction quality has passed the general contractor's acceptance. Compared with traditional construction, robotic operation offers higher efficiency, reduced labor demand, lower worker labor intensity, and improved construction environments. The entire construction process has achieved zero casualties and zero accidents, delivering significant economic and social benefits.



Anhui Tianchang Bo'an Project



Nansha Tanwei Village Renovation Project



Foshan Fengtong Garden

Service Commitment

Free one-time on-site delivery, installation, and on-site guidance for new machines⁽¹⁾; free installation and operation training; free remote technical support and consulting services; lifetime on-site service⁽²⁾; 1-year warranty for the complete machine⁽³⁾; 5-year spare parts supply guarantee; 7x24-hour service hotline; on-site service within 24 hours in stationed cities and 48 hours in other cities (excluding remote areas), or on-site service as agreed.

Notes: (1) One free on-site installation service is included. (2) During the warranty period, warranty-covered items are serviced free of charge; services beyond the warranty period or non-warranty items are provided at a charge. (3) Accessories and consumables are not covered by the warranty. High-quality accessories and consumables are available for customer purchase.

 Official Website: <https://www.bm-robot.com>

 Service Hotline: **400 988 2007**

(*Data are sourced from the BRIGHT MASTER ROBOTICS Laboratory. The final right of interpretation belongs to BRIGHT MASTER ROBOTICS. As technology is continuously updated, BRIGHT MASTER ROBOTICS reserves the right to modify its products. If technical parameters or product functions are changed, no further notice will be given. The actual delivered product shall prevail.)



BMR Official Website



BMR Tik Tok



BMR LinkedIn